

DESSO

Desert

CARPET TILES

Inspired
by Nature

 **Tarkett**

Inspired by shifting sands

Desert 9094, 7954, 7184

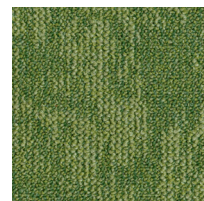




9094



7954



7184



Desert 1659, 2917, 9094, 6103, 7954, 7184



Inspired by shifting sands

Desert 7184



Desert 7954, 7184



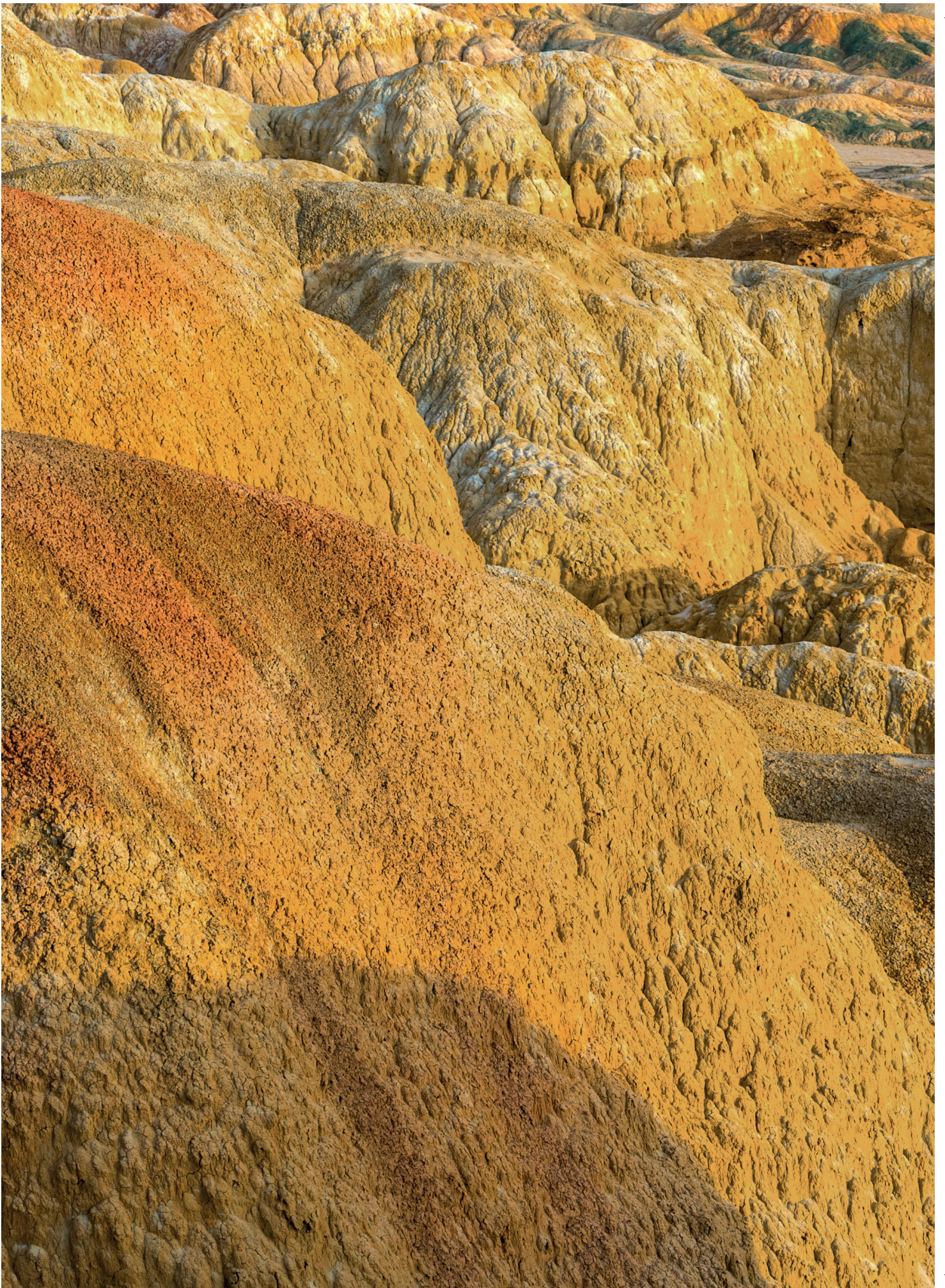
Inspired by Nature

Desert lends a feeling of vast, open spaces to the indoors with its subtly layered organic design. Like the shifting sands of the desert, this textured carpet tile allows you to play with the space to create a serene flooring scheme with a wide range of colours that vary from neutral tones to vibrant shades.

Desert donne une sensation d'ouverture et d'espace aux intérieurs, grâce à son design organique subtil. Comme les sables du désert, en mouvement incessant, cette dalle de moquette texturée permet de jouer avec l'espace pour créer un sol propice à la sérénité avec une large gamme de couleurs qui varient des tons neutres aux tons vibrants.

Desert benadrukt het gevoel van wijde, open ruimten in de binnenomgeving door zijn subtiel gelaagde, organische ontwerp. Zoals het zand beweegt in de woestijn, zo geeft deze tapijttegel de mogelijkheid te spelen met de ruimte en een serene vloerontwerp te creëren. Het kleurenpalet bestaat uit neutrale tinten en levendige kleuren.

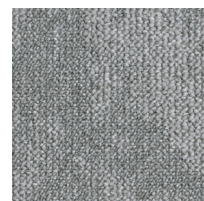
Desert verleiht Räumen mit ihrem subtil geschichteten organischen Design eine Atmosphäre weiter, offener Landschaften. Sie bietet ein lebendiges Flächenbild, ähnlich wie bei Dünensand. Die strukturierte Teppichfliese wird in neutralen Tönen und leuchtenden Farben angeboten.



Subtle, organic design



Desert 9517



9517

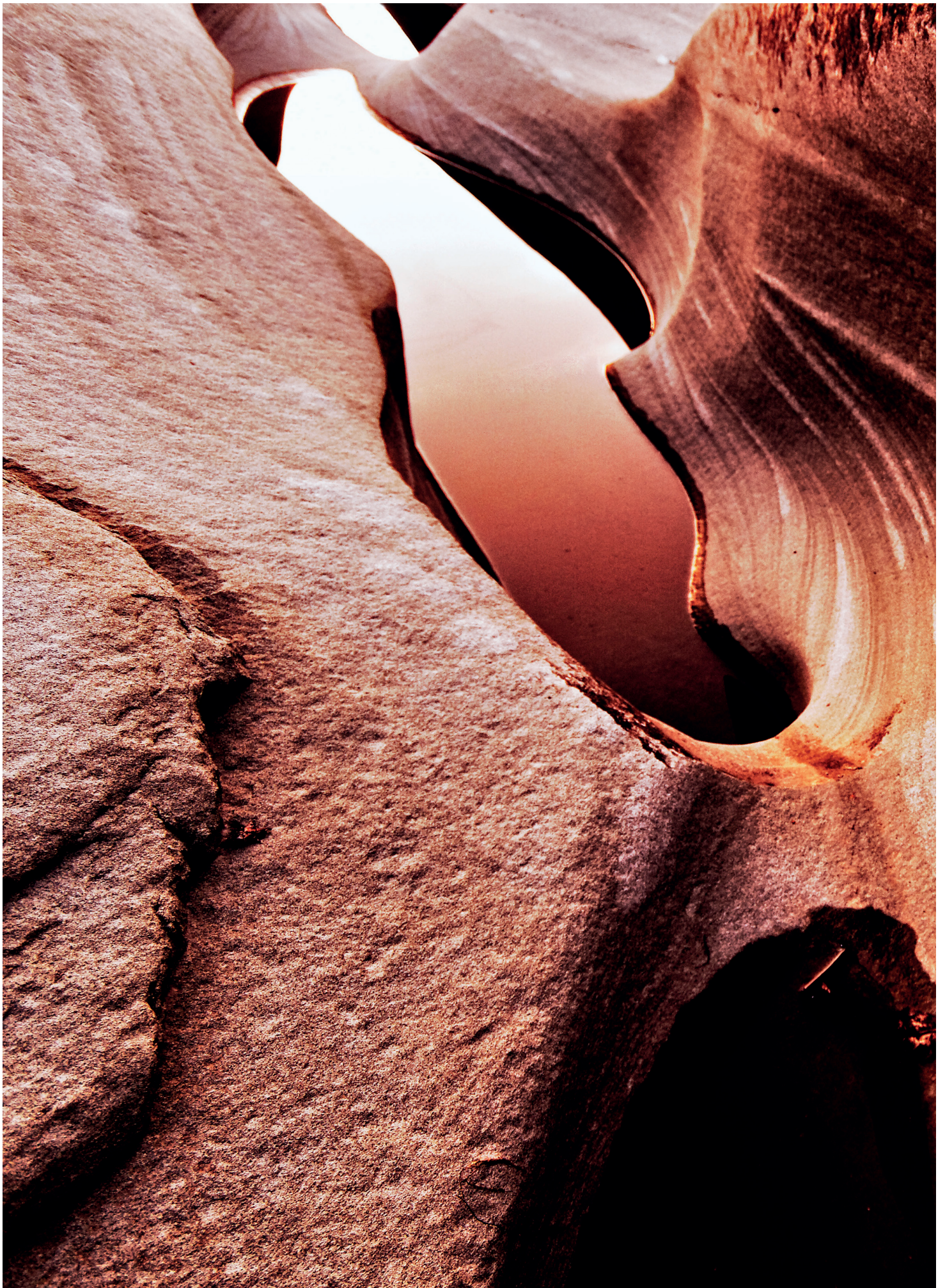
Subtle, organic design

Desert 9517



Desert 9517





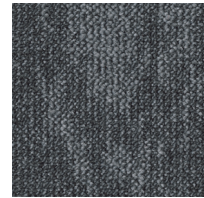


Desert 2917, 9532, 9502, 5011, 4118

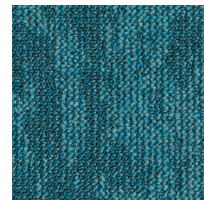
Play with texture and colour

Desert 9502, 8213, 8905

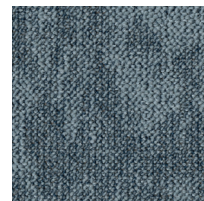




9502



8213



8905



Desert 9517, 8213, 8905, 8811, 3822, 9510



Play with texture and colour

Desert 9502, 8213, 8905



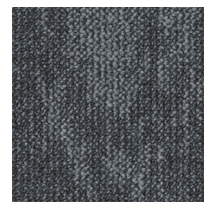
Desert 8905



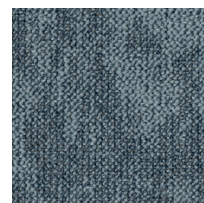
Play with texture and colour

Desert 9502, 8905





9502

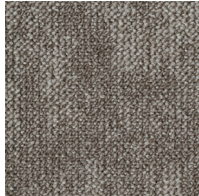


8905

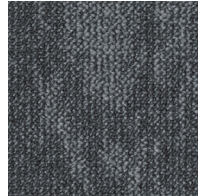
Colour range & Technical sheet



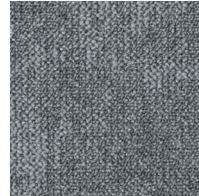
1659



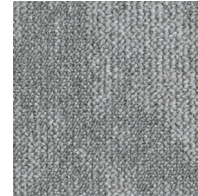
2915



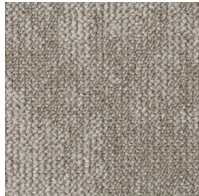
9502



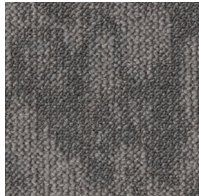
9505



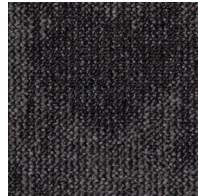
9517



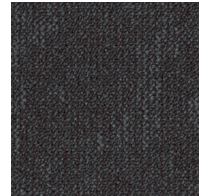
2917



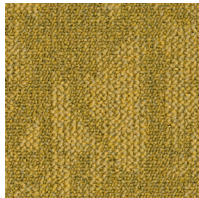
9094



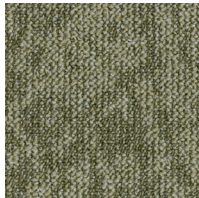
9532



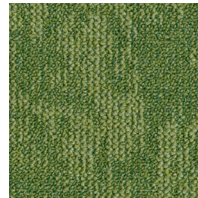
9510



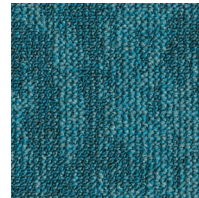
6103



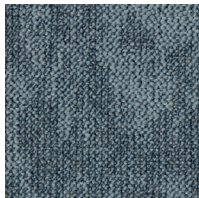
7954



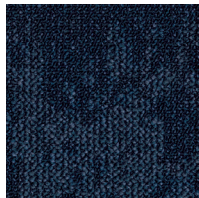
7184



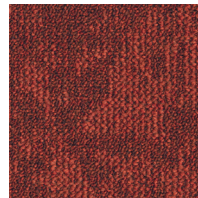
8213



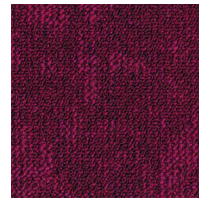
8905



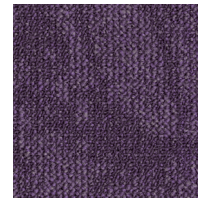
8811



5011



4118



3822

* ECONYL® is a yarn made from 100% regenerated content. The total % of regenerated content varies per product and per colour. Whether a colour contains ECONYL® and the exact % thereof can be found on our website: www.desso.com.

Desert

Preliminary specification according to EN 1307, Description du produit selon EN 1307, Voorlopige specificatie volgens EN 1307, Produktbeschreibung nach EN 1307

Type of manufacture Pile Fibre	ISO 2424 ISO 2424	Tufted 1/10" Structured loop pile Solution dyed BCF Polyamide 6 and ECONYL®*	Méthode de fabrication Velours	ISO 2424 ISO 2424	Touffeté 1/10" Velours bouclé structuré Solution dyed BCF Polyamide 6 et ECONYL®*
Dimensions	EN 994	50cm x50cm / 19,68" x 19,68"(20 tiles per box)	Largeur	EN 994	50cm x50cm / 19,68" x 19,68"(20 tiles per box)
Primary backing	ISO 2424	Polyester fleece	Premier dossier	ISO 2424	Polyester nappe
Secondary backing	ISO 2424	DESSO ProBase Polymer® - Polyscan®	Envers sous-couche	ISO 2424	DESSO ProBase Polymer® - Polyscan®
Total thickness	ISO 1765	6.0 mm	Epaisseur totale	ISO 1765	6.0 mm
Effective pile thickness	ISO 1766	3.1 mm	Epaisseur du velours	ISO 1766	3.1 mm
Total mass	ISO 8543	4100 g/m ²	Masse surfacique totale	ISO 8543	4100 g/m ²
Total pile mass	ISO 2424	590 g/m ²	Masse surfacique de velours totale	ISO 2424	590 g/m ²
Effective pile mass	ISO 8543	405 g/m ²	Masse surfacique de velours utile	ISO 8543	405 g/m ²
Pile density	ISO 8543	0.131 g/cm ³	Densité du velours	ISO 8543	0.131 g/cm ³
Number of tufts	ISO 1763	1580 /dm ²	Nombre de touffes	ISO 1763	1580 /dm ²
Stroll test	ISO 6356	≤ 2.0 kV	Essai du marcheur	ISO 6356	≤ 2.0 kV
Classification for use	EN 1307	33 Commercial - heavy use	Classement d'usage	EN 1307	33 Usage commercial intense
Dimensional stability	EN 986	≤ 0.2 %	Stabilité dimensionnelle	EN 986	≤ 0.2 %
Flammability	EN 13501-1	B _{fl} - s1	Indice de Réflectance de la	EN 13501-1	B _{fl} - s1

Preliminary specification

Tarkett carpet products are to be installed in full accordance with the DESSO installation instructions and recognised trade standards. An effective, regular cleaning and maintenance programme is vital for retaining a high appearance level. Tarkett carpet products should only be used as floorcoverings. Note: Tarkett reserves the right to amend this specification without giving prior notice. For the latest versions of the technical specifications, check our internet site: www.desso.com

Spécification de base

Moquettes Tarkett doivent être installés dans le respect des instructions de pose DESSO et en connaissance des conditions générales de vente. Un nettoyage efficace et régulier ainsi qu'un protocole d'entretien sont primordiaux pour conserver un niveau d'aspect élevé. Moquettes Tarkett sont conçus pour un usage exclusif au sol. Note: Tarkett se réserve le droit de modifier les caractéristiques techniques de ses produits sans avis préalable. Pour accéder aux dernières caractéristiques techniques, consulter notre site internet: www.desso.com

Fabricagemethode	ISO 2424	Getuft 1/10" Gesneden pool Lussenpool, gestructureerd	Art der Herstellung	ISO 2424	Getuftet 1/10" Schnittpol Schlingenpool strukturiert
Poolmateriaal	ISO 2424	Solution dyed BCF Polyamide 6 en ECONYL®*	Faserzusammensetzung	ISO 2424	Solution dyed BCF Polyamide 6 und ECONYL®*
Breedte	EN 994	50cm x50cm / 19,68" x 19,68"(20 tiles per box)	Abmessungen	EN 994	50cm x50cm / 19,68" x 19,68"(20 tiles per box)
Drager	ISO 2424	Polyester vlies	Trägermaterial	ISO 2424	Polyester Vlies
Rug	ISO 2424	DESSO ProBase Polymer® - Polyscan®	Rückenausrüstung	ISO 2424	DESSO ProBase Polymer® - Polyscan®
Totale dikte	ISO 1765	6.0 mm	Gesamtdicke	ISO 1765	6.0 mm
Effectieve pooldikte	ISO 1766	3.1 mm	Polschichtdicke	ISO 1766	3.1 mm
Totale massa	ISO 8543	4100 g/m ²	Gesamtgewicht	ISO 8543	4100 g/m ²
Poolinzetmassa	ISO 2424	590 g/m ²	Poleinsatzgewicht	ISO 2424	590 g/m ²
Effectieve poolmassa	ISO 8543	405 g/m ²	Polschichtgewicht	ISO 8543	405 g/m ²
Pooldichtheid	ISO 8543	0.131 g/cm ³	Pol-Rohdichte	ISO 8543	0.131 g/cm ³
Noppental	ISO 1763	1580 /dm ²	Noppenzahl	ISO 1763	1580 /dm ²
Elektrostatische oplading	ISO 6356	≤ 2.0 kV	Begehtest	ISO 6356	≤ 2.0 kV
Gebruikclassificatie	EN 1307	33 Projectgebruik - zwaar gebruik	Beanspruchungsbereich	EN 1307	33 Objektbereich gewerblich - Stark
Dimensionale stabiliteit	EN 986	≤ 0.2 %	Maßbeständigkeit	EN 986	≤ 0.2 %
Brandgedrag	EN 13501-1	B _{fl} - s1	Brandverhalten	EN 13501-1	B _{fl} - s1

Voorlopige specificatie

Tarkett tapijtproducten moeten worden geïnstalleerd in overeenstemming met de DESSO leginstructies en erkende standaarden. Een effectief en regelmatig reinigings- en onderhoudsprogramma is van belang voor het behoud van de vloer. Tarkett tapijtproducten dienen alleen als vloerbedekking te worden toegepast. Tarkett behoudt zich het recht voor deze specificaties te wijzigen zonder voorafgaande kennisgeving. De laatste versies van de technische specificaties kunt u vinden op onze website: www.desso.com

Vorläufiges Datenblatt

Tarkett Teppichböden müssen gemäß der jeweiligen DESSO Verlegeempfehlung und dem Stand der Technik verlegt werden. Die regelmäßige Unterhaltsreinigung ist entscheidend für die Sauberkeit, Werterhaltung und das gute Aussehen des Bodenbelags. Tarkett Teppichböden sollten nur als Bodenbelag verwendet werden. Tarkett behält sich das Recht vor, die technischen Daten zu verändern. Die neueste Version dieser Produktbeschreibung ist auf unserer Internetseite www.desso.com zu finden.



Manufactured by:
Fabriqué par:
Geproduceerd door:
Hergestellt von:



Tarkett BV
PO BOX 169
NL - 5140AD Waalwijk



Inspired by Nature

Tarkett B.V.
P.O. Box 169
5140 AD Waalwijk
The Netherlands

TEL. +31(0)416 684100
FAX +31(0)416 335955
desso@tarkett.com
www.desso.com
www.tarkett.com

Descriptions, colours and specifications are subject to change without notice. Tarkett is not responsible for typographical/photographical errors. Actual product may differ from illustration. All rights reserved. Reproduction in whole or in part is prohibited without the prior written consent of the copyright owner. The information presented in this document does not form part of any quotation or contract, is believed to be accurate and reliable and may be changed without notice. No liability will be accepted by the publisher for any consequence of its use. Publication thereof does not convey nor imply any license under patent- or other industrial or intellectual property rights. In case of doubt or differences of interpretation, the English version shall prevail over all other language versions.

© March 2018, Tarkett

Fotografie: Alexander van Berge
Styling: Bregje Nix
Thanks to:
www.Desque.nl
www.vitra.nl
www.eikelenboom.nl
www.thonet.nl
via www.conceptgallery.nl

Photo front page: Desert 9517

